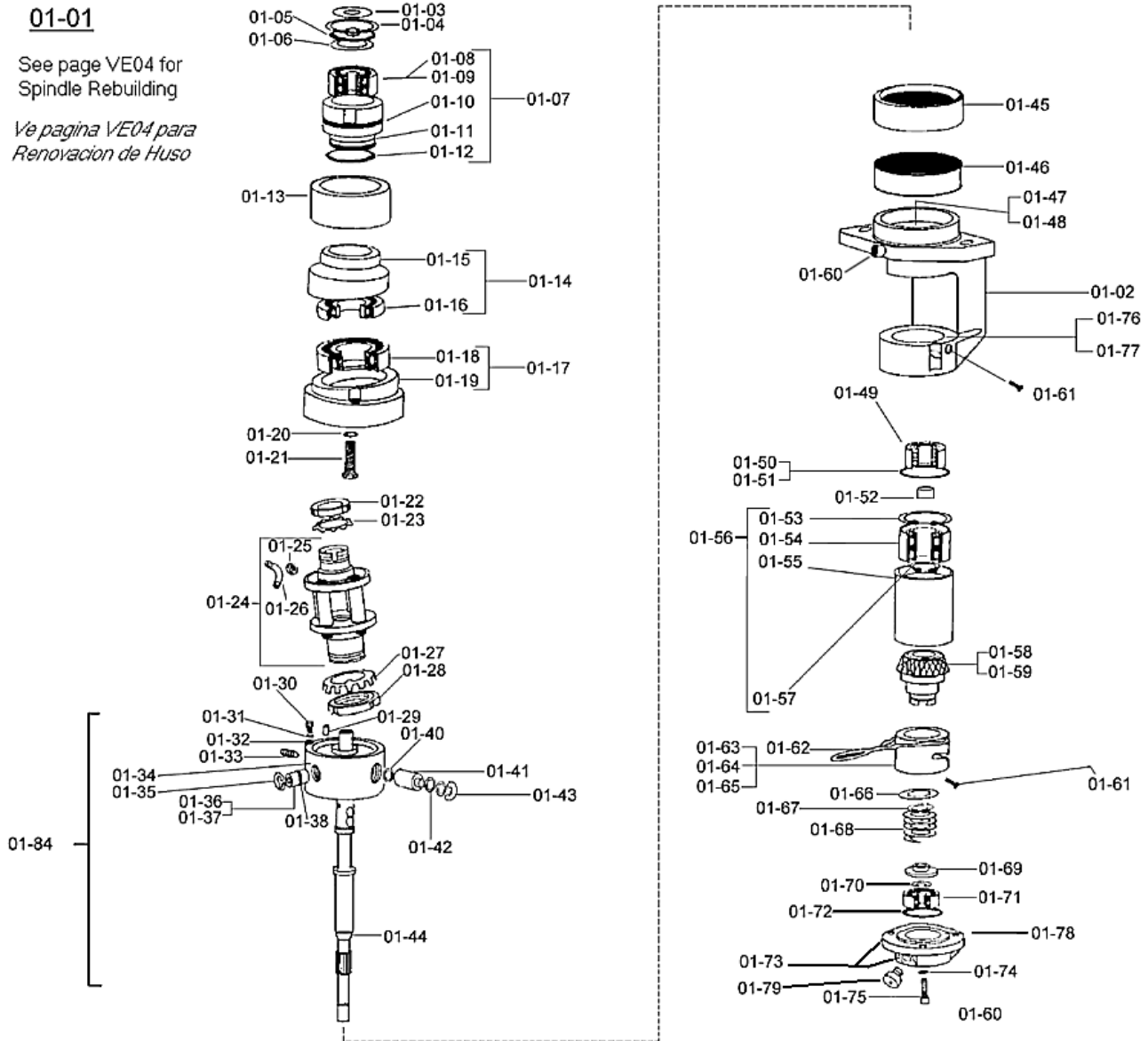


01-01

See page VE04 for Spindle Rebuilding

Ve pagina VE04 para Renovacion de Huso



EPIC PRECISION PARTS FOR VERDOL "R" SPINDLES, EXPANDED VIEW

PARTES EPIC DE PRECISION PARA HUSOS "R" DE VERDOL, ESQUEMA EXTENDIDA

Epic Enterprises, Inc., P.O. Box 979, Southern Pines, NC 28388-0979 USA
 Telephone Toll Free 800-648-7273 or 910-692-5441 Outside USA
 Fax Toll Free 888-692-4147 or 910-692-4147 Outside USA
 Website: <http://www.epicenterprises.com> E-Mail: epic@epicenterprises.com



Position	OEM Ref. Nos.	Epic No.	Description
VE01-01	151964A01	EE304840	Spindle Assembly, R <i>Conjunto Completo de "R" Huso</i>
VE01-01A	151964R	EE302930	Spindle, Rebuild Customer R CALL EPIC FOR PRICING <i>Reedificado Completo de Huso "R" Cliente EPOPEYA DE LA LLAMADA PARA TASAR</i>
VE01-01B	(152096A) (151803)	EE304940	Spindle, Rebuild Customer Assembly U to R CALL EPIC FOR PRICING <i>Conversion de Huso "U" a "R" EPOPEYA DE LA LLAMADA PARA TASAR</i>
VE01-01C	(152096A) (151522H)	EE304920	Spindle, Rebuild Customer Assembly G to R CALL EPIC FOR PRICING <i>Conversion de Huso "G" a "R" y Renovar Huso Completo EPOPEYA DE LA LLAMADA PARA TASAR</i>
VE01-01D	(152389A01) (152280AR)	EE304842	Spindle, Rebuild Customer RM Assembly Complete CALL EPIC FOR PRICING <i>Renovar RM Huso de Cliente EPOPEYA DE LA LLAMADA PARA TASAR</i>
VE01-01E	(152389A01) (152280AR)	EE304842-1	Spindle Assembly, RM, Complete, Rebuilt for Exchange CALL EPIC FOR PRICING <i>Conjunto Completo de "RM" Huso para Cambio EPOPEYA DE LA LLAMADA PARA TASAR</i>
VE01-02	(151981A00) (151966A03)	EE340036	Housing, R and RM Spindle <i>Caja para Huso R y RM</i>
VE01-02A	(VD000211) (151791) (151274) (151966A)	EE304900	Housing, Spindle, Converted U to R or G to R (Epic property) <i>Conversion de Caja de Huso de "U" o "G" o "R"</i>
VE01-02A	(VD000211) (151966A) (151791) (151274)	EE305556	Housing, Spindle, Converted U to R or G to R, Exchange (CALL EPIC FOR PRICING) <i>Conversion de Caja de Huso de "U" o "G" o "R" para</i>
VE01-02A	151981A00 151966A03	EE340036-1	Housing, R and RM Spindle with Dust Ring <i>Caja para Huso R y RM con Protector de Polvo</i>
VE01-03	119094 VD000061	EE302100	Washer, Rubber <i>Arandela de Goma para Discos Ceramicos De Tension</i>
VE01-04	558044A	EE304045	Ring, Internal Retaining (30I) <i>Retenador Internal, 30mm</i>
VE01-05	119093D VD000060	EE302080	Washer, Steel for 4200 Bearing <i>Arandela de Acero para Rodiamento 4200</i>
VE01-06	(VD000062) (119098A)	EE302120	Washer, Seal (Spacer) <i>Arandela Selladura (Espaciador)</i>
VE01-07	151731S	EE302660	Bearing, Top Assembly, (Steel Cage) <i>Conjunto de Rodiamento Superior con Jaula de Acero</i>



Position	OEM Ref. Nos.	Epic No.	Description
VE01-08	(569027SS)	EE304202-1	Bearing, Top, Steel Cage, 5200, without seals (Note: Do not use EE302120 Washer. And, Use EE302081 modified washer in place of EE302080 washer). <i>Rodamiento Rodillos 5200 Superior con Jaula Acero</i>
VE01-09	(569027SS)	EE304202	Bearing, Top, 5200, Double Seal <i>Rodamiento Superior de Rodillos 5200C3-RR</i>
VE01-10	318598 581013B R24PB701	EE304500	O-Ring, Top Bearing Upper <i>Anillo "O" Superior</i>
VE01-11	151729B00 VD000269	EE302600	Housing, Top Bearing <i>Caja para Rodiamento Superior</i>
VE01-12	581011C R20PC851 VD001881	EE304460	O-Ring, Top Bearing Lower <i>Anillo "O" for Rodamientc</i>
VE01-13	151138A VD000205	EE302480	Cover, Dust <i>Protector de Polvo</i>
VE01-14	151900	EE302860	Bearing, Upper Oblique Assembly <i>Conjunto Superior de Rodiamento Obliquo</i>
VE01-15	151897	EE302820	Housing, Upper Oblique Bearing <i>Caja Superior de Rodiamento Obliquo</i>
VE01-16	569013S	EE304120	Bearing, Upper Oblique, 16004C3 <i>Rodamiento de Bolas 16004C3 para Caja Superior Oblicue</i>
VE01-16A	Not Applicable	EE304120-2	Bearing, Upper Oblique, 16004C3, SKF <i>Rodamiento de Bolas 16004C3 para Caja Superior Oblicue, SKF</i>
VE01-17	151899	EE302840	Bearing, Lower Oblique Assembly <i>Conjunto Bajo de Rodiamento Obliquo</i>
VE01-18	569016S 6005C3	EE304140	Bearing, Lower Oblique, 6005C3 <i>Rodamiento de Bolas 6005C3 para Caja Inferior Oblicuo</i>
VE01-19	151896	EE302800	Housing, Lower Oblique Bearing <i>Caja Baja de Rodiamento Obliquo</i>
VE01-20	22520201 555048A DE5	EE303860	Washer, External Serrated Lock, 5mm (Unplated) <i>Arandela Dentado External, 5mm</i>
VE01-21	520022A HM5X25	EE303720	Screw, Hex Head Cap, 5X25 <i>Tornillo Hexagonal, 5X25</i>
VE01-22	130002	EE302320	Nut, Small <i>Tuerca Chica</i>
VE01-23	140002B VD000197	EE302380	Lock Washer, Small <i>Arandela Chica de Retencion</i>
VE01-24	151380D VD000214	EE302500	Stabilizer, Assembly Complete <i>Conjunto Completo de Estabilizador</i>



Position	OEM Ref. Nos.	Epic No.	Description
VE01-25	130010C	EE302340	Nut, Stabilizer <i>Tuerca para Estabilizador</i>
VE01-26	140003C VD000198	EE302400	Plate, Stabilizer Locking <i>Placa de Retencion para Estabilizador</i>
VE01-27	140001B VD000196	EE302360	Lock Washer, Large <i>Arandela Grande de Retencion</i>
VE01-28	130001	EE302300	Nut, Large <i>Tuerca Grande</i>
VE01-29	559504A	EE304080	Pin, Cylinder Roll, 3X10mm <i>Pasador Paralelo, 3X10mm</i>
VE01-30	520012A HM4X12	EE303680	Screw, Upper Cylinder <i>Tornillo para Cilindro Superior</i>
VE01-31	555047A DE4	EE303840	Washer, External Serrated Lock, 4mm <i>Arandela Dentado External, 4mm</i>
VE01-32	555036A ZU4	EE303820	Washer, Regular Flat, 4mm <i>Arandela Plana, 4mm</i>
VE01-33	2034301 536028B 536604B 950612	EE303780	Screw, Hex Socket Cone Point Set, 6X12 <i>Prisionero Cabeza Hexagonal Hueca con Punta Conica, 6X12</i>
VE01-34	151389G VD000215	EE302520	Cylinder, R, U & G with Roll Pin & Set Screw <i>Cilindro R, U & G con Gurrón y opresor</i>
VE01-35	558063A	EE304060	Ring, Cylinder Retaining (I 16K) <i>Retenador External para Caja Superior para Rodiamientc</i>
VE01-36	151830	EE302780	Plug, Nylon Cylinder O-Ring Type <i>Tapon de Nylon para Cilindro para Anillo "O"</i>
VE01-37	151390G VD000216	EE302522	Plug, Nylon Cylinder, Standard <i>Tapon Normo de Nylon para Cilindro</i>
VE01-38	581021C	EE304520-1	O-Ring, Cylinder for EE302780 Nylon Cylinder Plug <i>Anillo "O" para EE302780 Tapon</i>
VE01-38A	(581021C) 318581	EE309044	O-Ring 9.5 X 1.5mm <i>Anillo "O", 9.5 X 1.5mm</i>
VE01-40	151120B VD000203	EE302460	Eyelet, Cylinder <i>Ojo Ceramico para Cilindro</i>
VE01-41	151907A01	EE302880	Tube, Centering <i>Tube para Centrajea</i>
VE01-42	580000A	EE304420	Washer, Cylinder Wave <i>Arandela Ondulada</i>
VE01-43	558063A	EE304060	Ring, Cylinder Retaining (I 16K) <i>Retenador External para Caja Superior para Rodiamientc</i>



Position	OEM Ref. Nos.	Epic No.	Description
VE01-44	(151965A)	EE302940	Axle, R Spindle <i>Eje de Huso "R"</i>
VE01-45	151433	EE302540	Cover, Spindle Dust <i>Protector de Polvo</i>
VE01-46	151435	EE302545	Ring, Spindle Dust <i>Anillo de Proteccion de Polvo para Huso</i>
VE01-47	(152088A00)	EE303200	Sleeve, Standard .100" Flanged, for Rebored Housing with O-Ring <i>Manga Norma Para Caja Reparada con Anillo "O" con Manga 0.100"</i>
VE01-48	(152088A00)	EE303200-1	Sleeve, for Relocation, .150" Flanged, for Rebored Housing with O-Ring <i>Manga para Relocalizacion, a con Anillo "O" con Manga 0.150"</i>
VE01-48A	(152088A00)	EE303200-2	Sleeve for Damaged Housing, 0.150", Flanged, for Rebored Housing with O-Ring <i>Manga para Caja Danada, 0.150" a con Anillo "O" con Manga</i>
VE01-49	569028S	EE304220	Bearing, R Spindle Housing, 3202 with Steel Cage <i>Rodamiento Doble de Bolas para Caja de Huso "R"</i>
VE01-50	318580 581158C R26PC85LJF X318580	EE304540	O-Ring for Spindle Housing <i>Anillo "O" para Caja de Huso</i>
VE01-51	318603 581188C	EE304530	O-Ring 35 X 1.6 <i>Anillo "O", 35 X 1.6</i>
VE01-52	152045A00	EE303120	Spacer, for R and RM Spindles <i>Espaciador para Husos R y RM</i>
VE01-53	558027A C2035	EE304020	Ring, R Whorl Retaining (35I or C2.035) <i>Retenador Internal, 35mm</i>
VE01-54	(440114C)-SKF 569061B DF0213LLU/15A	EE304242	Bearing, R Whorl, NTN <i>Rodamiento Doble de Bolas para Nuez R</i>
VE01-55	151972A VD000326	EE303000	Housing, R or RM Whorl, 40mm <i>Caja de Nuez R y RM, 40mm</i>
VE01-56	151977A	EE303101	Whorl Assembly, R or RM (NTN) <i>Conjunto de Nuez para Husos R & RM</i>
VE01-57	558005A C1015	EE303900	Ring, External, Retaining, (15E or C1.015) <i>Retenader External, 15mm</i>
VE01-58	(151970D) VD000325	EE302980-1	Clutch Cone Assembly, STEEL, R or RM, Hardened <i>Conjunto de Cono Acero para Freno Endurecido</i>
VE01-59	152053B	EE303140-4	Clutch Cone Assembly, BRONZE, SA <i>Cono Completo de Bronce para Freno, "SA"</i>



Position	OEM Ref. Nos.	Epic No.	Description
VE01-60	(581057A) 318580 VD001923	EE304535	Fitting, Grease, for R Spindle Base <i>Pieza de Grasa para Huso Inferior "R"</i>
VE01-60	354797 318580 581057A VD001923	EE309090	Fitting, Grease, for Verdol Spindle Housing and Base Cap <i>Pieza de Grasa</i>
VE01-61	120002H	EE302280	Screw, Hardened Cam <i>Tornillo Endurecido para Cerrojo</i>
VE01-62	151788A01	EE302720	Wire Handle Assembly <i>Conjunto de Asa de Alambre</i>
VE01-63	000330 151975B 151975B00 151975	EE303060	Sleeve, R Cam (Hardened) (Does Not Require Wear Pad) <i>Manga Endurecida para Cerrojo sin Cojincillode Uso</i>
VE01-64	(VD000330) 151975B	EE303080	Sleeve, R Cam (Hardened) with Hardened Cam Screws <i>Manga Endureada para Cerrojo "R" con Tornillos de Cerrojo</i>
VE01-65	(VD000330) 151975A	EE303082	Sleeve, R Cam (Hardened) With Wear Pad <i>Manga Endureaida para Cerrojo "R" con Cojincillo de USO</i>
VE01-66	151973A VD000328	EE303020	Washer, Steel, for R, RM & F44 Spindle <i>Arandela Acero para Husos R, RM y F44</i>
VE01-67	212408 558006A C1016	EE304040	Ring, External Retaining, 16mm <i>Retenador External, 16mm</i>
VE01-68	(117143A00) 117068 92501003 X92501003	EE302040	Spring, Spindle for R, U, & G Spindle (also used for Balloon Centering Guide) <i>Resorte para Husos R, U & G y Guia de Balon</i>
VE01-69	151974A03 VD000329	EE303040	Spacer, Spring <i>Espacador - Resorte</i>
VE01-70	212671 558002A C1010	EE303880	Ring, External Retaining, (10E or C1.010) <i>Retenador External, 10mm</i>
VE01-71	569063S	EE304260	Bearing, R& RM Spindle Base, 6200 (Open) <i>Rodamiento de Bolas 6200 para Huso Inferior, "R" y "RM"</i>
VE01-72	318597 581012C	EE304480	O-Ring, R Base <i>Anillo "O" para Huso Inferior "R"</i>
VE01-73	152087A01 151976A01	EE303180	Cap, Bottom Housing, with O-Ring & Grease Fitting <i>Cubierta Inferior de Caja con Anillo "O" y Pieza de Grasa</i>
VE01-74	22520201 555048A DE5	EE303860	Washer, External Serrated Lock, 5mm (Unplated) <i>Arandela Dentado External, 5mm</i>



Position	OEM Ref. Nos.	Epic No.	Description
VE01-75	20283401 524509B HICM5X16	EE303760	Screw, Socket Head Cap, 5X16 <i>Tornillo Cilindrico, 5X16</i>
VE01-76	(152084A00)	EE303115	Sleeve, Repair, for Lower Spindle Housing <i>Manga a Repara Caja de Huso Interior</i>
VE01-77	(152084A00)	EE303116	Sleeve, Repair, Lower Spindle Housing <i>Manga a Repara Caja de Huso Interior</i>
VE01-78	152074A	EE303160	Cover, Dust, Plastic <i>Protector Plastico de Polvo</i>
VE01-79	(581057A) 318580 VD001923	EE304535	Fitting, Grease, for R Spindle Base <i>Pieza de Grasa para Huso Inferior "R"</i>
VE01-79	354797 318580 581057A VD001923	EE309090	Fitting, Grease, for Verdol Spindle Housing and Base Cap <i>Pieza de Grasa</i>
VE01-80	Not Applicable	EE304820V	Grease, Spindle Bearing, Kluber, 1 Kilo (Not Shown) <i>Grasa Sintetica para Rodamientos de Huso (por Kilo)(No Ilustrado)</i>
VE01-81	Not Applicable	EE304823	Grease, R Axle Spline (30CC Syringe) (Not Shown) <i>Gasa para ranvras de Eje de Huso en Jeringa de 30cc (No Ilustrado)</i>
VE01-82	Not Applicable	EE304821	Grease, R Axle Spline, Kluber (1 Kilo Can) (Not Shown) <i>Grasa para Ronvros de Eje de Huso, 1kg. (No Ilustrado)</i>
VE01-83	Not Applicable	EE304822	Loctite RC/609-21, 10 ml. Bottle for securing spindle bearings (Not Shown) <i>Cola Loctite RC/609-21 para sequiridad de rodamientos de Huso, 10ml.</i>
VE01-84	151980A00	EE309096	Axle, R, and Cylinder Assembly <i>Conjunto de Eje "R" y Cilindro Completc</i>

Epic products are intended as replacements for worn or damaged parts in OEM products. OEM Part numbers in (parenthesis) indicate either 1) Improved design 2) the part serves the same function as the OEM part, but may differ from the OEM design, or 3) it is a component of an assembly where no OEM reference number is available, or 4) it is a repair service for the referenced OEM part.

Parts with EE designations are manufactured by Epic and are not authorized by the original equipment manufacturers.

The information herein falls within the normal range of product properties and is based on typical usage results within the industry of the products. Epic assumes no obligation or liability for any advice or information supplied by Epic. The user assumes all responsibility for determining the results and suitability of the products within the user's plant. All such information is provided gratis and user assumes sole responsibility for results obtained.

Volkman is a trademark of Saurer AG. Verdol is a trademark of ICBT.

EE is an Epic trademark designating Epic parts.

Verdol is a trademark of Rieter/ ICBT

© Epic Enterprises, April 2005

